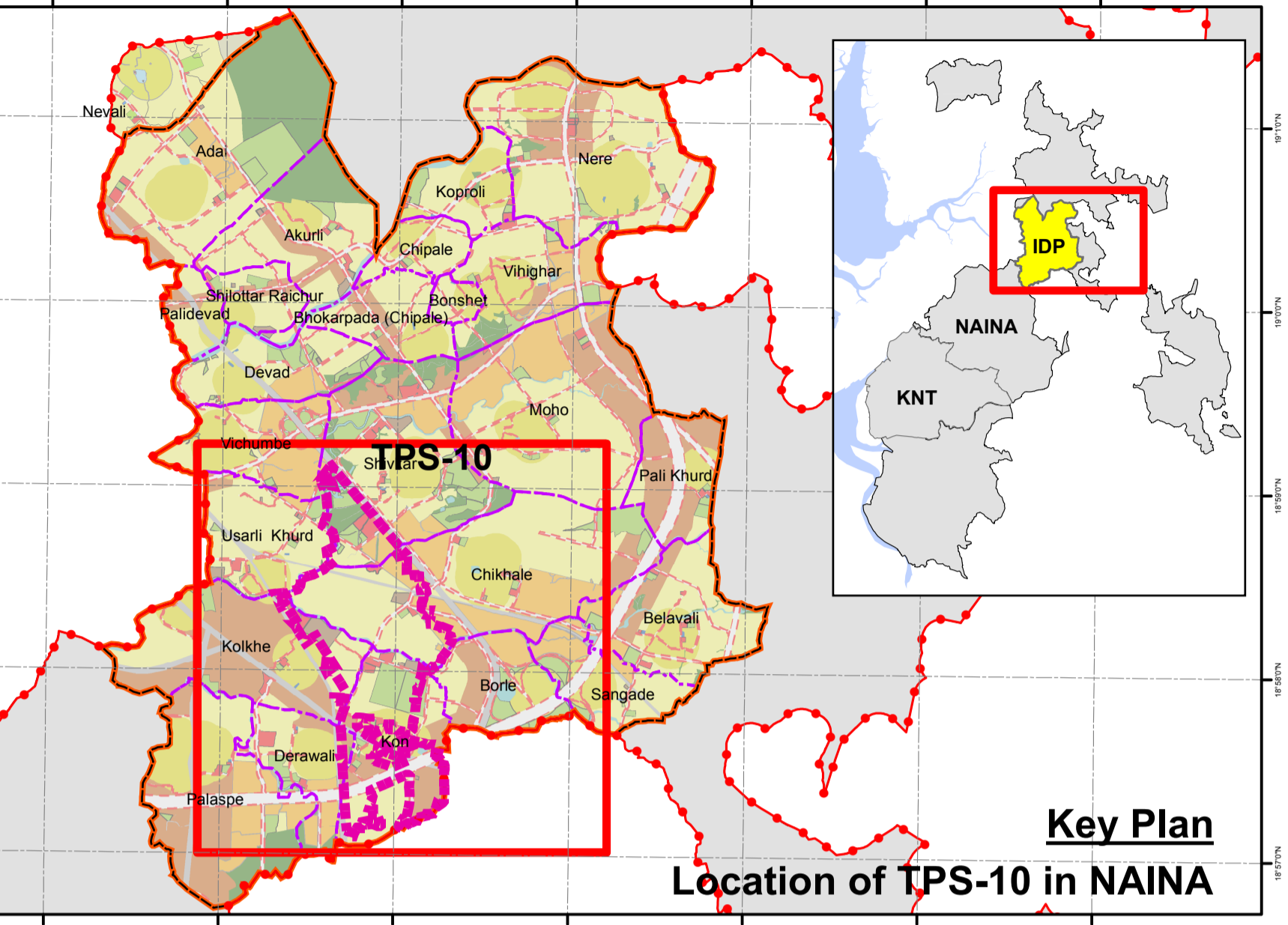
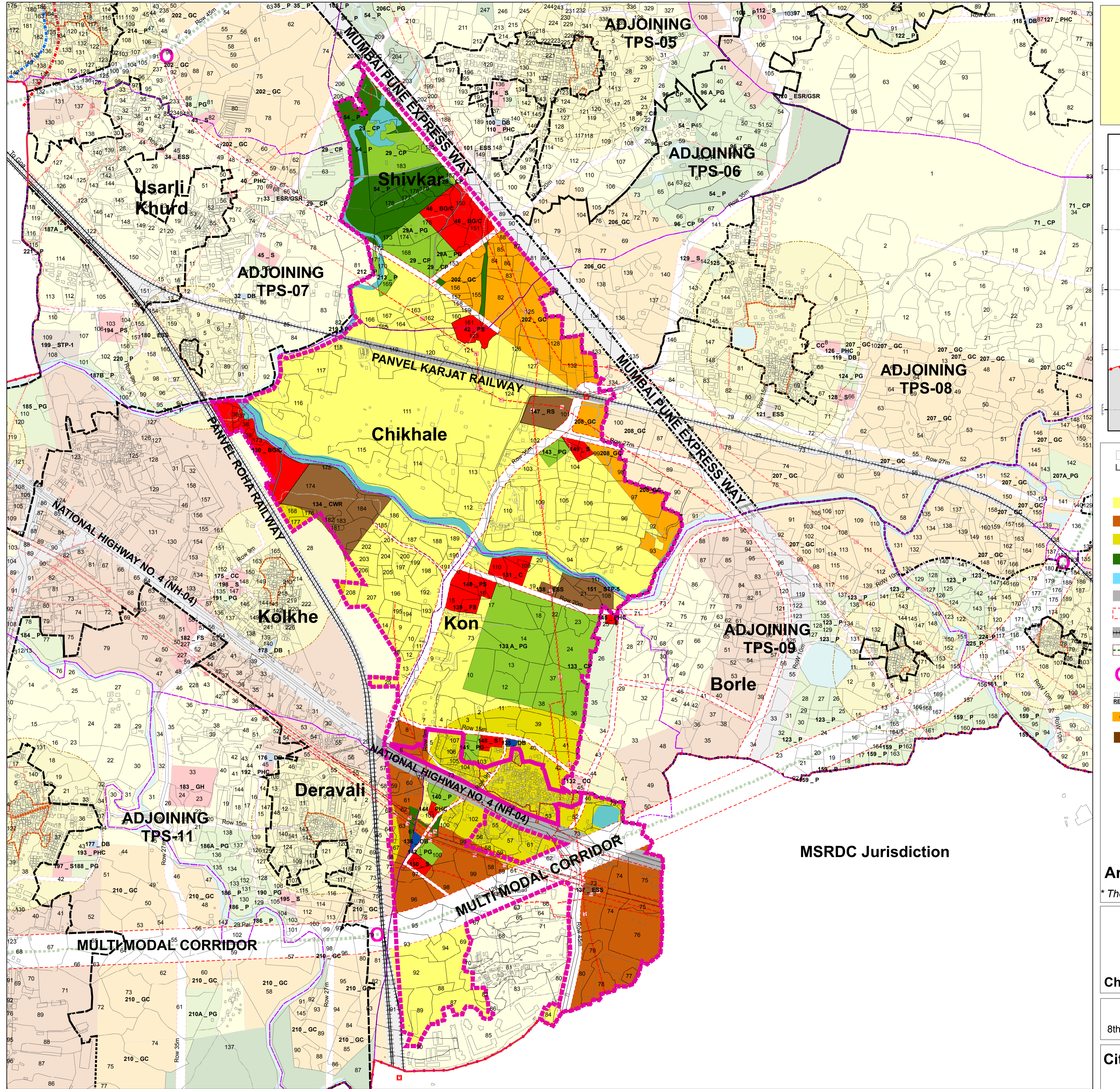


Plan showing Boundary of Town Planning Scheme 10 (TPS-10)

Shivkar(Pt), Chikhale (Pt), Deravali (Pt), Kolkhe (Pt), Kon (Pt)
Accompaniment of Declaration of Intention u/s 60(1) of the M.R. & T.P. Act, 1966



LAND USE CLASSIFICATIONS

N1	PREDOMINANTLY RESIDENTIAL	EDUCATIONAL	STATE BOUNDARY
N3	MIXED USE	S SCHOOL	DISTRICT BOUNDARY
N4	URBAN VILLAGES	C COLLEGE	TALUKA BOUNDARY
Forest	FOREST	Medical	Village Boundary
Water Bodies	WATER BODIES	PHC PRIMARY HEALTH CENTRE	NAINA BOUNDARY
Existing Roads	EXISTING ROADS	GH GENERAL HOSPITAL	NAINA PHASE-I BOUNDARY
Proposed Roads	PROPOSED ROADS	MARKETS	IDP BOUNDARY
Railway Line	RAILWAY LINE	DAILY BAZAAR	SECTOR BOUNDARY
Proposed Metro Line	PROPOSED METRO LINE	COMMUNITY SERVICES	MUNICIPAL / SPA BOUNDARY
Proposed Metro Station	PROPOSED METRO STATION	FS FIRE STATION	GATHEAN / SETTLEMENT
RESERVATIONS		PS POLICE STATION	SURVEY / REVENUE BOUNDARY
GC GROWTH CENTRE		CC COMMUNITY CENTRE	HISSA BOUNDARY
PUBLIC UTILITIES		BGC BURIAL / CREMATION GROUND	BRIDGE
ESS 33 KV	33 KV ELECTRIC SUBSTATION	PARKS & PLAYGROUNDS	FOOT TRACK
ESR/GSR	ELEVATED SERVICE RESERVOIR / GROUND SERVICE RESERVOIR	P PARK	RAIL LINE
CWR	CLEAR WATER RESERVOIR	PG SCHOOL PLAYGROUND	RAILWAY STATION
STP	SEWAGE TREATMENT PLANT	CP CITY PARK	POWER TRANSMISSION LINE
RS	220 KV RECEIVING STATION		
PU	PUBLIC UTILITIES		

Town Planning Scheme 10 Boundary (TPS10)

Area of Scheme: 284 Ha (approx.)
 * The above area is subject to verification of 7/12 and measurement plan by Land Record Office.

Chief Planner (NAINA) Scale: NTS

Navi Mumbai Airport Influence Notified Area (NAINA)
 8th Floor, Tower no. 10, CBD Belapur Railway Station Complex, CBD Belapur, Navi Mumbai - 400614

City & Industrial Development Corporation of Maharashtra LTD
 CIDCO Bhavan, CBD, Belapur, Navi Mumbai - 400614